



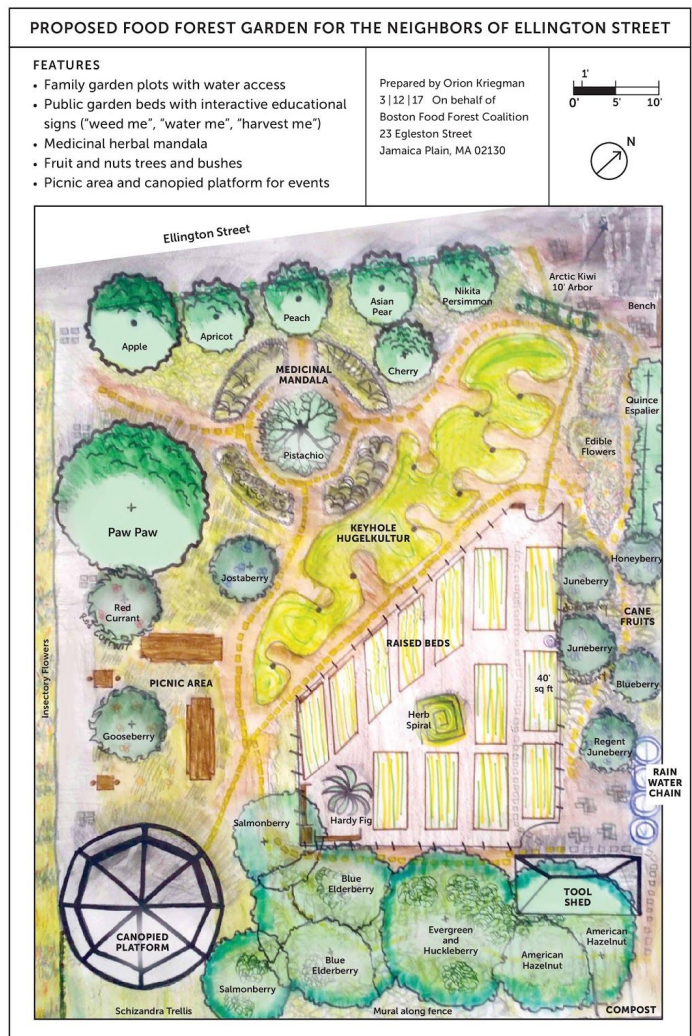
# BOSTON FOOD FOREST COALITION

## Examples of Other Urban Food Forests Developed by Boston Food Forest Coalition

### Ellington Community Food Forest - 101&103 Ellington Street, Dorchester

In 2012, working with local residents and neighborhood organizations, youth leaders from ACE (Alternatives for Community and Environment) installed a dozen raised garden beds in old tires and recycled wooden and metal boxes. However the remaining space on the site remained overgrown with weeds, and no additional support was provided to local neighborhood gardeners.

In 2015, in collaboration with ACE's youth leaders, Boston Food Forest Coalition met with local residents in an iterative design process to develop a detailed plan (pictured right). In 2017-2018, with support from DND Grassroots Fund, Trust for Public Land, Riley Foundation, and New England Grassroots Fund, as well as hundreds of volunteer hours from local residents, BFFC removed invasive weeds and scrub trees, repaired the soil, and installed 20 new raised beds as well as a city water hookup and garden hose. To complete the transformation into a community food forest, BFFC added additional amenities: accessible pathways, picnic tables, gazebo, tool shed, community bulletin board, stone patio, new cedar fence, medicinal herb mandala, espalier fruit tree, over 50 fruit trees and shrubs, pollinator and wildflower garden, benches. Now in 2019, we are in the final stages of installation of this food forest and BFFC is taking deed to the land as part of our land trust. This site was featured in the Dorchester Reporter in an August 2018 article: <https://www.dotnews.com/2018/he-s-mission-turn-boston-collection-food-forests>



### **Egleston Community Orchard (ECO) - 195 Boylston Street, Jamaica Plain**

ECO is considered one of the founding member sites of Boston Food Forest Coalition and was launched as a guerilla garden in 2010 by local residents, who later gained a license to develop a garden on the site by working first in partnership with Jamaica Plain New Economy Transition (JPNET) and Commonwealth Land Trust (CLT), and since 2015 with BFFC. In 2015, BFFC in partnership with CLT and DND, put ECO into permanent land trust (BFFC has a Memorandum of Agreement with CLT outlining the terms of ownership and operation of the space and we anticipate taking deed to the land in 2019).

BFFC developed ECO through a series of annual workdays that also served as skillshare opportunities among neighbors, organized and led by Boston Food Forest Coalition staff, interns and volunteers. These events have included building raised beds, planting fruit trees, and installing a brick path, grape arbor, bird bath, rain water barrels, patio, stone bench, tool shed, and perennial garden beds. Since 2010, this 3,725 sq ft lot has remained unlocked and open to the general public and has been used by neighbors for early morning coffee, birthday parties, easter-egg hunts, summer movie nights, and annual spring and harvest festivals.

BFFC has managed this work and the ongoing care and maintenance of the space by supporting and training the local neighborhood Stewardship Committee. BFFC interns, volunteers and fellows continue to provide professional logistical, educational, horticultural, fundraising and carpentry support. In 2015, ECO was featured in the Christian Science Monitor: <http://www.csmonitor.com/World/Making-a-difference/Change-Agent/2015/1002/A-visionary-s-quest-a-city-filled-with-gardens>



*The original site of Egleston Community Orchard served as a memorial for two gun victims, and the design of the space includes a brick path that leads from the grape arbor entranceway to a wildflower bed planted in the center, at the location of the original memorial.*

## Boston Nature Center Food Forest - 500 Walk Hill Street, Mattapan

Since 2014, BFFC has been working with funding from Mass Audubon's Boston Nature Center (BNC) to manage and improve their one acre urban orchard. Now in its fifth season of operation, BFFC has planted over seventy fruit and nut trees, shrubs, and perennials. BFFC has installed several mounded "hugelkultur" beds safe for annual vegetable production (husk cherries, squash, potatoes, strawberries, kale, calendula, and more). We also installed an herb spiral, a grape arbor, wood chip pathways, compost, rainwater irrigation system, and recently added American Chestnut trees back to the landscape with the support of the American Chestnut Foundation. All of this work was done through educational workshops teaching gardening skills through applied activities to hundreds of volunteers. BFFC and BNC worked together to raise funds to support this educational work primarily from private foundations. In 2015, WFXTV-Fox25 and the Trust for Public Land recognized the work of BFFC through the Cox Enterprises Foundation "Cox Conserves Heroes" award (see <http://www.massaudubon.org/news-events/press-room/2015/boston-nature-center-food-forest-volunteer-a-heroes-finalist>).



The initial design for the 1-acre food forest has been updated and refined, and we are now in our fourth year of planting the site through our educational workshop series, Learning by Doing.

